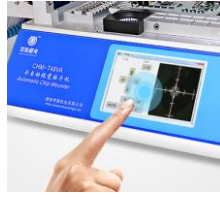


CHMT48VA PICK AND PLACE MACHINE

- * All-in-one machine, no need external PC
- * High speed mounting with 2 cameras Vision system
- * 29pcs feeders with 2 Placement Heads
- * Embedded Linux system
- * Industry high reliable mainboard
- * Closed-loop control
- * High quality Juki Nozzles
- * Multi PCB assembly support



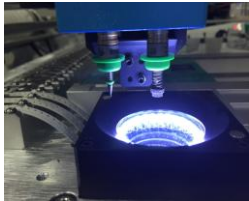
Touch screen/USB mouse
No need external PC



IC tray



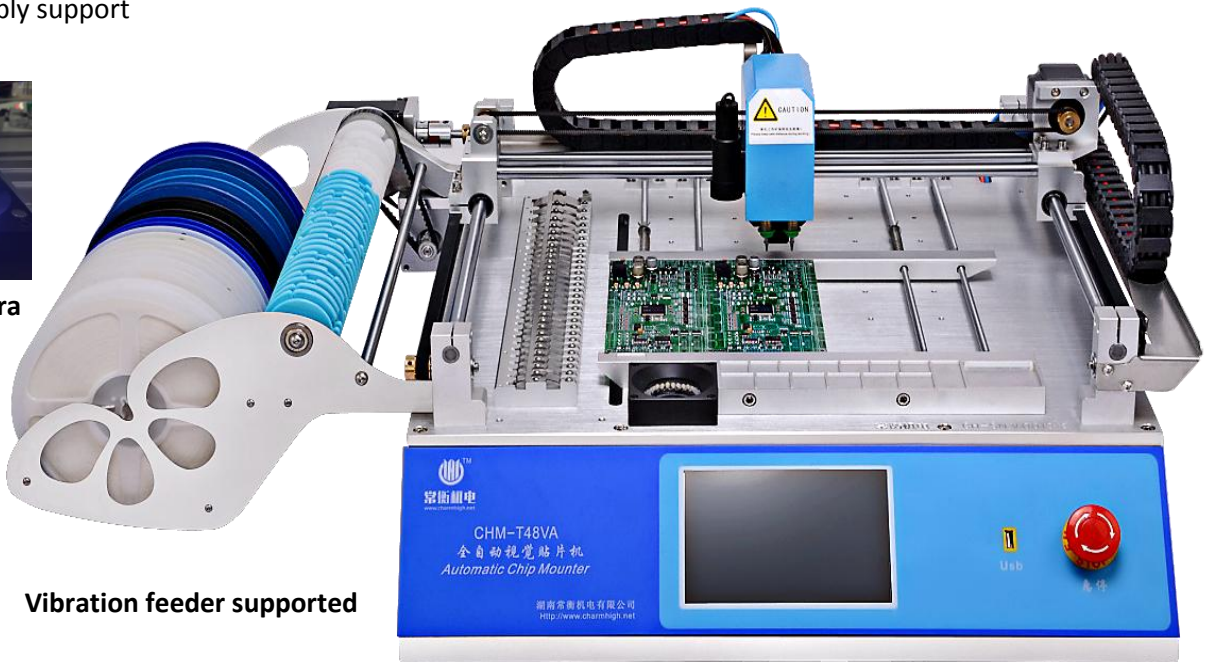
Motor closed-loop control



Double CCD camera
Vision system
Juki nozzle



Vibration feeder supported



Model	CHM-T48VA
XYZ Axis travel	400mm(X)×460mm(Y)×15mm(Z)
PCB max size	10*10mm ~ 355mm(L)×355mm(W)
Support components	0402,0603-5050, SOP, QFN etc.
Mounting speed	Without vision:6000cph; With Vision:4000cph
Precision	±0.025mm
Placement head	2 heads
Feeding system	29pcs feeders(8mm 22; 12mm 4; 16mm 2; 24mm 1); 14 bulk IC; 20 custom IC tray
Demension	960mm(L)×705mm(W)×335mm(H)
Vision detection	Double cameras (up & down)
Motor control	XY Axis stepper motor with encoder closed-loop control
Components leakage detection	Z Axis reset detection; Vision inspection
Main board	High-reliability industry motherboard
Touch Screen	7 inches industry LCD screen
Operation system	Embedded Linux system
Air source	in-build 2 vacuum pump
Pull pin needle auto return	Yes, to avoid pull pin broke
Support software	Altium designer, Protel99SE, PADS, Kicad, Eagle, Cadint, Cadence Orcad, Cadence Allegro, PROTEUS...etc
Power supply	AC220V 50Hz / AC110V 60Hz
Power	250W
Net weight	65Kg