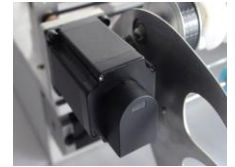
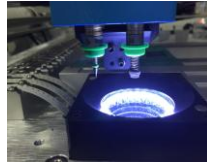


# CHM-T36VA PICK AND PLACE MACHINE

- \* 2 Placement Heads + 29 feeders
- \* High accuracy mounting with 2 Vision cameras
- \* Motors with encoder, closed-loop control
- \* External PC operation with win7/10 system
- \* Industry high reliable mainboard
- \* High quality Juki Nozzles
- \* Multi PCB assembly support
- \* Cut tape/ bulk IC/ IC tray support



Up&down 2 vision cameras; IC tray; Motor closed-loop control



Vibration feeder supported (optional)



External Computer Operation

Model	CHM-T36VA
XYZ Axis travel	400mm(X)×460mm(Y)×15mm(Z)
PCB max size	10*10mm ~ 345mm(L)×360mm(W)
Support components	0402/0603~5050/SOT/SOP/QFP/QFN/BGA, etc. (resistor/capacitor/diode/triode/LED/IC, etc.) Highest component 5mm
Mounting speed	Without vision:4000cph; With Vision:2500cph
Precision	±0.025mm
Placement head	2 heads
PCB thickness	0.6-3.5mm
Transmission system	Synchronous belt+polished rod
Feeding system	29pcs feeders(8mm 22pcs; 12mm 4pcs; 16mm 2pcs; 24mm pcs); 14 front bulk IC; 20 custom IC tray
Demension	960mm(L)×705mm(W)×335mm(H)
Vision detection	Double camera (up & down)
Motor control	XY Axis stepper motor with encoder closed-loop control
Components leakage detection	Z Axis reset detection; Vision inspection
Main board	High-reliability industry motherboard
Touch Screen	No touch screen, operation with external PC(windows7,10)
Operation system	External PC control with Charmhigh software
Air source	Built-in 2 vacuum pumps, no external air supply required
Pull pin needle auto return	Yes, to avoid pull pin broke
Support software	Altium designer,Protell99SE,PADS,Kicad,Eagle,Cadint,Cadence Orcad,Cadence Allegro,PROTEUS..etc
Power supply	AC220V 50Hz / AC110V 60Hz
Power	250W
Net weight	50Kg